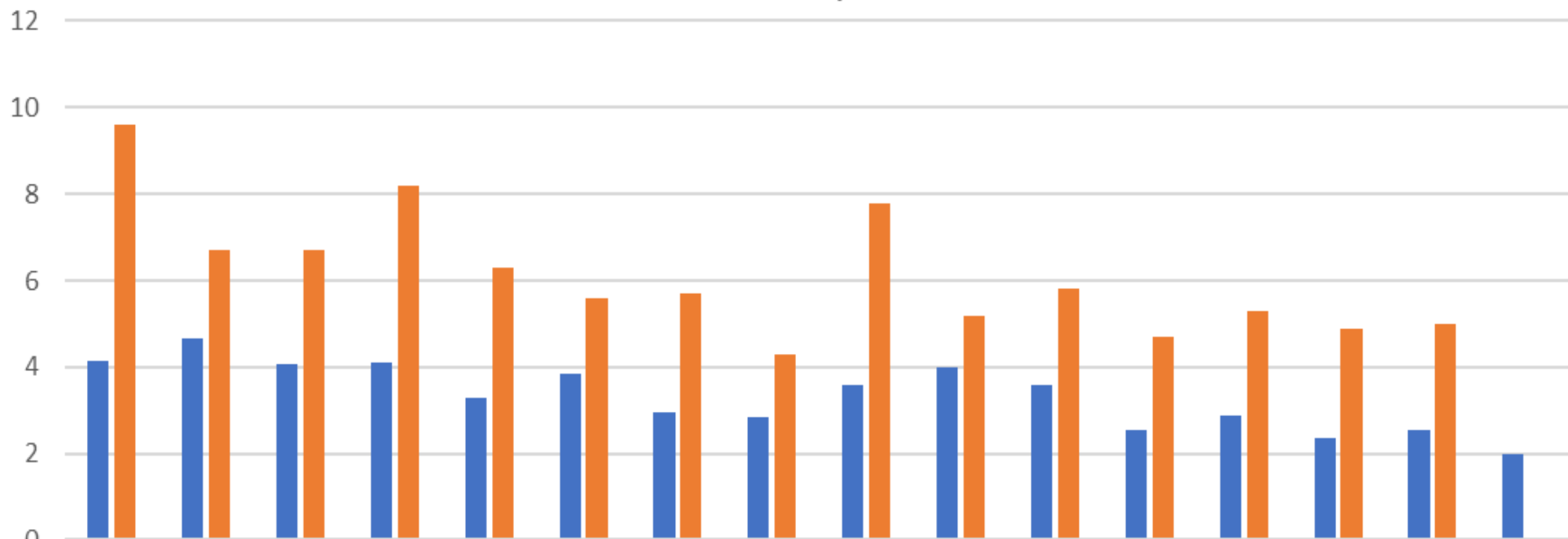


## MN Construction Industry Total Case Injury / Incidence Rates vs. CHASE Participants



	2003	2004	2005	2006	2007	2008	2009	2010	2011	2012	2013	2014	2015	2016	2017	2018
■ CHASE	4.15	4.68	4.07	4.12	3.3	3.85	2.97	2.85	3.6	3.99	3.59	2.54	2.88	2.37	2.54	1.97
■ MNOSHA	9.6	6.7	6.7	8.2	6.3	5.6	5.7	4.3	7.8	5.2	5.8	4.7	5.3	4.9	5	

■ CHASE   ■ MNOSHA



Minnesota OSHA / Associated General Contractors of Minnesota  
 Construction Health and Safety Excellence (CHASE) Partnership 2018  
 Contractors Reported 2018 Work Hours = 17,375,726 Group Total Case Injury / Illness Rate: 1.97  
 60.60% Safer than the Minnesota Construction Industry 2017 Average Rate of 5.0

NAICS Codes	Total Partners	CHASE 2018 Total Average Group Incident Rates	2017 BLS MN Construction Industry Average Group Incident Rates	CHASE Group Rates "VS" MN Industry Rates
236 Generals	13	2.12	4.3	CHASE Generals 50.70% Safer than MN Construction Industry Average 6,562,133 Work / Hours
237 Highway / Heavy	12	1.83	4.9	CHASE Highway / Heavy 62.65% Safer than MN Construction Industry Average 3,981,237 Work / Hours
238 Specialty	9	1.95	5.3	CHASE Specialty 63.21% Safer than MN Construction Industry Average 6,832,356 Work / Hours



# CHASE Partnership Activity Report 2018

## 17,375,726 Work /Hours

- 11,047 - New employee orientations
- 1,923 - Near Miss reports
- 34,063 - Site (Subcontractors) all hands orientations
- 205,016 - Daily Pre-Task Planning, JSA / JHA's
- 61,677 - Weekly safety meeting / Tool box talks
- 13,288 - Total number of people doing "Daily Stretch & Bend" weekly
- 11,386 - Total weekly site safety inspections completed by safety department
- 43,171 - Total weekly site safety inspections completed by field supervisors / safety committee members
- 13,245 - Total weekly site safety inspections completed by subcontractors