

**DBE Vendors:**

**DBE Bidding Opportunity in Hennepin County**

**Project:** Lexington & Loan Oak Road Recon

**Bid Date:** Wednesday, 8/20/2019

**Bid Time:** 9:00 AM

**Completion Dates:** September 9th 2020

**Contractor:** Max Steininger, Inc.

**DBE Goal:** 8.4% DBE

**Your proposals are due by: 5pm, Monday 8/19/19 (including Letter of Intent)**

Max Steininger Inc. is bidding this project as a prime contractor and is soliciting qualified bidders for DBE participation. To assist, we have attached the following documents:

- Bid form
- Plan title sheet
- Copy of Ad
- Scope of work
- Summary of work
- Letter on Intent

Max Steininger, Inc. is an Equal Opportunity Employer and encourages participation from all certified DBE subcontractors and suppliers.

For the benefit of all contractors we have scanned plans on a hosting site called [www.questcdn.com](http://www.questcdn.com).

Questcdn is a reputable member only website that allows subcontractors to get plans online by paying a small fee of \$10.00. Once you download plans, all addendums when posted will also be available for you to download.

-Below are the steps to obtain a copy of the plans

Plans and Specs are available online at QuestCDN.com. Paper copies are also available in our office.

- Sign in using your QuestCDN login.
- Next step is to click on PROJECTS. Then click SEARCH PROJECTS.
- It will ask for a Quest EDOC# to locate bidding documents.

Enter **Quest EDOC # 6464779**

Password: **82**

Also, the plans can be obtained through the Dropbox link below with no additional costs.

If you use the Dropbox link to get plans and specs for this project, please be warned that it is your responsibility to contact us for any future addendums that are issued from the time of receipt of this email to the bid date and time. While the QuestCDN hosting site is automatically updated with any issued addendums, the Dropbox link does not stay updated with addendums.

#### **Dropbox Link to Access Bidding Documents:**

**<https://www.dropbox.com/home/Estimator/GFE%20for%20Lexington%20%26%20Lone%20Oak%20Road%20>**

If you have any questions in obtaining a copy of the plans **call Quest CDN at 952-233-1632**. Also if you would like to get a copy from our office please know that they are available for you to copy. Kindly call ahead at **651-454-6620** so we can make sure someone is there to assist when you visit. We have reached your firm because it is listed in the MNUCP business category.

Last but not least:

If you need assistance with Bonding, lines of credit- please contact our office for assistance in this area.

If you need assistance in locating equipment and supplies to prepare your quote for this project, please contact our office.

If you need technical assistance in preparing your quote in accordance with the Plans and Specifications, please contact our office.

**We also request that all potential vendors solicited kindly send a response back via email or via fax to our office referencing this particular project if this is of interest to you and will you be quoting or not highlighting the type of work you will be quoting.**

Thanks in advance,

Estimating Staff

Max Steinger Inc.  
3080 Lexington Ave. S.  
Eagan, MN 55121  
[651-454-6620 \(o\)](tel:651-454-6620)

[651-454-6716 \(f\)](#)



MINNESOTA DEPARTMENT OF TRANSPORTATION  
**DAKOTA COUNTY & CITY OF EAGAN**  
 CONSTRUCTION PLAN FOR: GRADING, BITUMINOUS SURFACING, STORM SEWER, SIGNALS,  
 RETAINING WALL, POND, AND ADA IMPROVEMENTS

LOCATED ON CSAH 43 (LEXINGTON AVENUE) FROM 790' S OF CSAH 26 (LONE OAK ROAD) TO 1190' NORTH OF CSAH 26 (LONE OAK ROAD)

FEDERAL PROJ. NO. STPF 1918(126)

GOVERNING SPECIFICATIONS

THE 2018 EDITION OF THE MINNESOTA DEPARTMENT OF TRANSPORTATION  
 "STANDARD SPECIFICATIONS FOR CONSTRUCTION" SHALL GOVERN.

ALL TRAFFIC CONTROL DEVICES AND SIGNING SHALL CONFORM AND BE PLACED IN  
 ACCORDANCE WITH THE MOST RECENT VERSION OF THE "MINNESOTA MANUAL ON  
 UNIFORM TRAFFIC CONTROL DEVICES" (MN MUTCD) AND PART VI, "FIELD MANUAL  
 FOR TEMPORARY TRAFFIC CONTROL ZONE LAYOUTS".

INDEX

SHEET NO.	DESCRIPTION
1	TITLE SHEET
2 - 4	STATEMENT OF ESTIMATED QUANTITIES (E01-E03)
5	STANDARD PLATES AND CONSTRUCTION NOTES (SCN1)
6	EARTHWORK TABULATION AND SUMMARY (EW1)
7 - 10	QUANTITY TABULATIONS (TB1-TB4)
11 - 16	INPLACE UTILITY TABULATIONS (UT1-UT6)
17 - 23	TYPICAL SECTIONS (TS1-TS7)
24 - 31A	DESIGN DETAILS (DDL-DB8A)
32 - 49	STANDARD PLAN SHEETS (SPN1-SPN18)
50 - 72	CONSTRUCTION STAGING AND TRAFFIC CONTROL PLAN AND TABULATIONS (TC1-TC23)
73 - 74	ALIGNMENT PLAN AND TABULATIONS (AL1-AL2)
75 - 76	TOPOGRAPHY AND INPLACE UTILITY PLANS (TP1-TP2)
77 - 78	REMOVAL PLAN (RMI-RM2)
79 - 82	CONSTRUCTION PLAN AND PROFILES (CP1-CP4)
83 - 87	INTERSECTION AND PEDESTRIAN RAMP DETAILS (PD1-PD8)
91 - 94	SOLDIER WALL PLANS AND PROFILE, TABULATION, AND DETAILS (RW1-RW4)
95 - 97	DRAINAGE & UTILITY PLAN AND PROFILES (DR1-DR3)
98 - 99	POND CONTOUR AND GRADING PLAN (CNI-CN2)
100-101	STORM WATER POLLUTION PREVENTION PLAN (SWP1-SWP2)
102-103	TURF ESTABLISHMENT AND EROSION CONTROL PLAN (EC1-EC2)
104-113	SIGNING AND PAVEMENT MARKING PLAN (SSI-SS10)
114-135B	SIGNAL PLAN (SGL1-SGL135B)
XS1-XS12	CROSS SECTIONS (XS1-XS12)

THIS PLAN CONTAINS 151 SHEETS

**SHORT ELLIOTT HENDRICKSON INC.**  
 3535 VADNAIS CENTER DRIVE  
 ST. PAUL, MN. 55110

I HEREBY CERTIFY THAT THIS PLAN WAS PREPARED BY ME OR UNDER MY DIRECT SUPERVISION AND THAT I AM A DULY LICENSED PROFESSIONAL ENGINEER UNDER THE LAWS OF THE STATE OF MINNESOTA.

PRINT NAME: JASON E. OWENS LICENSE # 43475

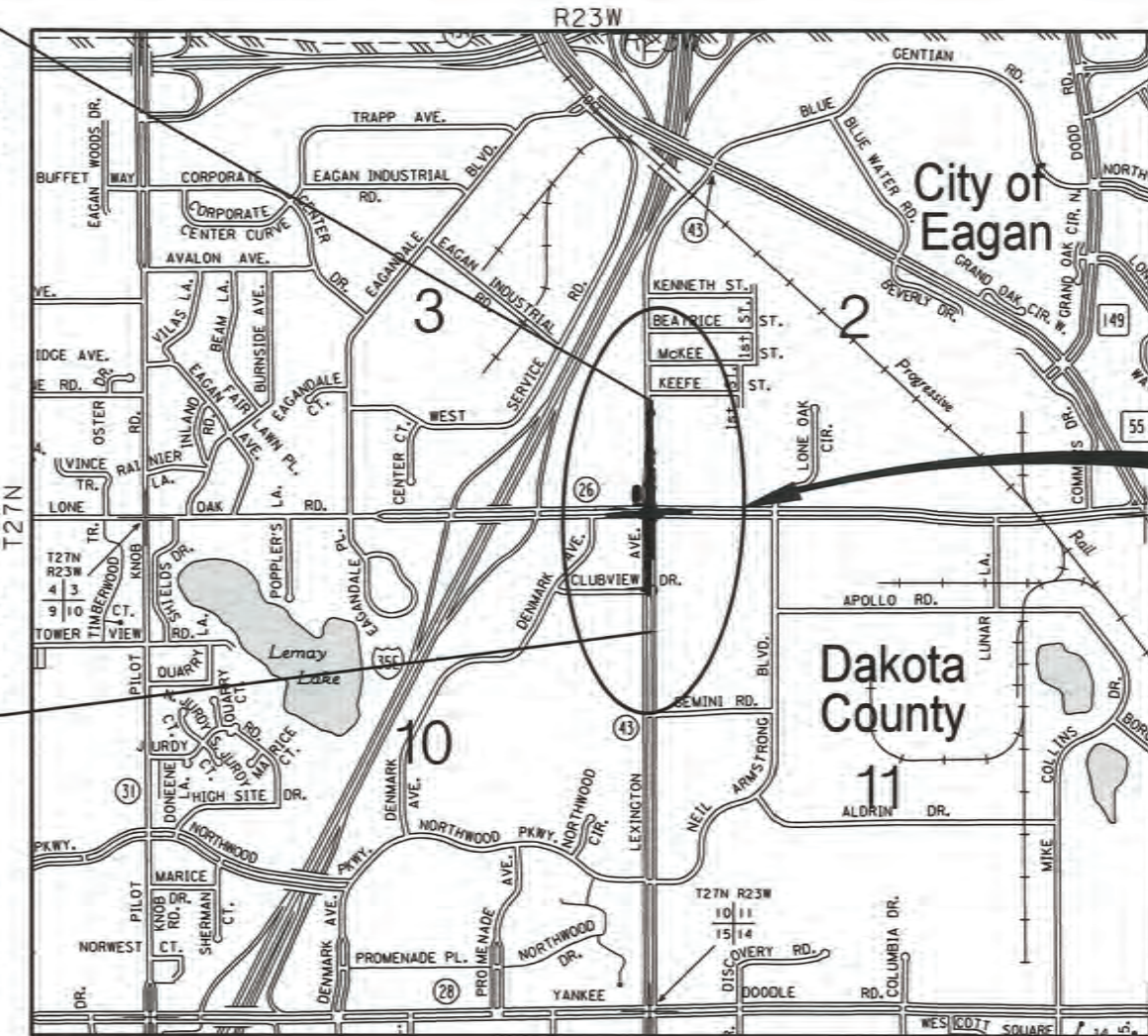
DATE: 6/20/2018 SIGNATURE: *Jason E. Owens*

APPROVED *Mark K...* 6/22 2018  
 DAKOTA COUNTY ENGINEER

APPROVED *Jim Smith* 6/22 2018  
 CITY OF EAGAN ENGINEER

*Catherine Hubbell* 6/25 2018  
 DISTRICT ENGINEER-STATE AID  
 REVIEWED FOR COMPLIANCE WITH STATE AID AND FEDERAL AID RULES/POLICY

*Catherine Hubbell* 6/25 2018  
 APPROVED FOR STATE AND FEDERAL AID FUNDING STATE AID ENGINEER



S.P. 019-643-007  
 NB CSAH 43  
 GROSS LENGTH 2447.26 FEET 0.464 MILES  
 BRIDGES-LENGTH FEET MILES  
 EXCEPTIONS-LENGTH FEET MILES  
 NET LENGTH 2447.26 FEET 0.464 MILES  
 NOTE: LENGTH AND DESCRIPTION BASED ON NB CSAH 43 ALIGNMENT

PROJECT LOCATION

END S.P. 019-643-007  
 COUNTY PROJ. NO. 26-52  
 CITY PROJ. NO. 1251  
 NB CSAH 43  
 STA. 84+56.13

BEGIN S.P. 019-643-007  
 COUNTY PROJ. NO. 26-52  
 CITY PROJ. NO. 1251  
 NB CSAH 43  
 STA. 60+08.87

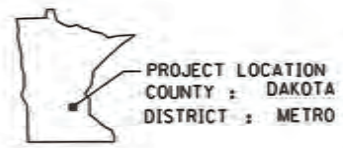
NOTE:  
 THE SUBSURFACE UTILITY INFORMATION IN THIS PLAN IS UTILITY QUALITY LEVEL "D". THIS QUALITY LEVEL WAS DETERMINED ACCORDING TO THE GUIDELINES OF C1/ASCE 38-02, ENTITLED "STANDARD GUIDELINES FOR THE COLLECTION AND DEPICTION OF EXISTING SUBSURFACE UTILITY DATA".

THE EXACT LOCATION OF UNDERGROUND UTILITIES SUCH AS GAS, TELEPHONE, FIBER OPTIC, PIPELINES, ELECTRIC, AND CABLE TV ARE UNKNOWN. THE CONTRACTOR SHALL CONTACT GOPHER STATE ONE CALL BEFORE COMMENCING EXCAVATION.

GOPHER STATE ONE CALL... 1 800-252-1166

DESIGN DESIGNATION FOR:

	CSAH 43	CSAH 26	TRAIL
FUNCTIONAL CLASSIFICATION:	MINOR ARTERIAL	MINOR ARTERIAL	
NO. OF TRAFFIC LANES:	4	4	
NO. OF PARKING LANES:	0	0	
SHOULDER WIDTH:	10 FEET	2 FEET	
STRUCTURAL DESIGN:	10 TON		
R VALUE:	9		
ESALS	3,868,000		
ADT (CURRENT YEAR) (2018)	18,200	23,900	
ADT (FUTURE YEAR) (2038)	22,210	29,163	
HCA2T (FUTURE YEAR) (2038)	2,020	2,657	
DESIGN SPEED:	50 MPH	50 MPH	20 MPH
BASED ON:	STOPPING SIGHT DISTANCE	STOPPING SIGHT DISTANCE	STOPPING SIGHT DISTANCE
HEIGHT OF EYE:	3.5 FT	3.5 FT	4.5 FT
HEIGHT OF OBJECT:	2.0 FT	2.0 FT	0.0 FT



SCALES

INDEX MAP	1000'
PLAN	100'
PROFILE	50' HORIZ. 5' VERT.
X-SECTION	10' HORIZ. 10' VERT.

PLAN REVISIONS		
DATE	SHEET NO.	APPROVED BY
10/6/17	2-4,7,8-10,29,31,75-78,80,83-87,90	
10/6/17	95-99,103,121,122,126,130,136A-B	



PROJECT: **Lexington & Loan Oak Road Recon**

Max Steninger, Inc is planning to submit a Prime Bid on the above Referenced Project and we are requesting bids from qualified bidders.

BID DATE: **8/20/2019**  
 BID TIME: **9:00 AM**

DBE GOAL: **8.4% DBE**

**YOUR PROPOSALS ARE DUE TO US BY: 5pm, Monday 8/19/19 (including Letter of Intent)**

We also provide you with a line item description of the bid form if available and if you need to break down a scope of work into more economically feasible units, please feel free to do so. We welcome this as it gives us an opportunity to debundle work if needed towards meeting the DBE Goals.

For this project, the specific scope of work that we feel describes the opportunities are checked below:

	<b>Categories</b>	<b>Description of Work</b>
	Concrete	Concrete Paving
	Concrete	Supplies of Concrete Aggregates
	Concrete	Concrete Repairs
	Concrete Bridge	Structural Concrete Bridge/Ret Walls
	Concrete Structural	Structural Concrete Miscellaneous
✓	Curb & Walks	Concrete Curbs & Gutter
✓	Curb & Walks	Concrete Walks
	Earth Retention	Engineering for Sheeting, Shoring
	Earth Retention	H- Piles
	Earth Retention	Sheet Piling
✓	Earth Retention	Shoring & Sheet Piling
	Earthwork	Dewatering
	Earthwork	Crushing Of Recycled Aggregates
	Earthwork	Hydraulic Excavation
✓	Earthwork	Supply of Granular & Aggregates
	Electrical	Electrical Airport Related
	Electrical	Electrical Lighting
✓	Electrical	Electrical Signal
✓	Electrical	Loop Detectors
✓	Electrical	Supplies of Electrical Materials
	Environmental	Environmental testing and Consulting
	Environmental	Haul & Dispose Contaminated Soils
	Environmental	Haul & Dispose Impacted Soils
✓	Erosion Control	Erosion Control- Permanent
✓	Erosion Control	Erosion Control- Temporary
✓	Erosion Control	Hydroseeding Temp
✓	Fencing	Fencing / Bollards
✓	Field Engineering	As- Built Surveys
	Field Engineering	Surveying
	Guardrail	Guardrail
✓	Milling	Bituminous Milling
	Misc	Boardwalks, Decks, Woodwork
	Misc	Clean up Vac Trucks
	Misc	Flagging- Highway Work
	Misc	Lumber Supplies
	Misc	Pilot Car- Airport Secured Area
✓	Misc	Field Office
	Asbestos	Asbestos Abatement

	<b>Categories</b>	<b>Description of Work</b>
	Misc	Pilot Car- Highway Work
✓	Misc	Port-a-Potys
	Misc	Radio Car- Airport Secured Area
	Misc	Site Amenities, Benches, Kiosks
✓	Misc	Supplies of Misc Construction Materials
✓	Misc	Sweeping- Pickup Brooms
✓	Ornamental	Ornamental Steel
✓	Pavement Markings	Epoxy- Pavement Markings
✓	Pavement Markings	Paint- Pavement Markings
✓	Pavement Markings	Poly- Pavement Markings
	Pavement Markings	Thermo- Pavement Markings
✓	Paving	Asphalt Paving
✓	Paving	Supplies of Asphalt Materials
	Retaining Walls	Soil Retention Walls
	Retaining Walls	Mod Block Walls
	Saw & Seal	Joint Adhesives
	Saw & Seal	Saw & Seal Pavement
✓	Sawcutting	Sawcutting
	Signage	Permanent Sign Panels
✓	Site Utilities	Castings & Other Misc Structures
✓	Site Utilities	Drainage Structures
✓	Site Utilities	Sanitary
✓	Site Utilities	Storm Sewer
✓	Site Utilities	Watermain
	Steel	Fabricated Steel
✓	Subdrainage	Drain Tile
	Testing	Moisture & other Geotechnical Testing
	Traffic Control	J Barriers
✓	Traffic Control	Pavement Marking Removals
✓	Traffic Control	Temp Signage
✓	Traffic Control	Traffic Control
✓	Tree Clearing	Clear & Grub
✓	Trucking	Rubble
✓	Trucking	Aggregates, Misc Earth Materials
✓	Turf Establishment	Hydroseeding Permanent
✓	Turf Establishment	Seeding
✓	Turf Establishment	Sodding
	Landscaping	Trees, Plantings, Soils for Planting Medium

**DAKOTA COUNTY PROPOSAL  
FOR HIGHWAY CONSTRUCTION  
AND MAINTENANCE PROJECTS**

Bids will be received by Dakota County through <https://bidvault.mn.uccs.com>,  
until **9:00 a.m. on Tuesday, August 20, 2019**

Proposal of \_\_\_\_\_

Name

Address

Contact Person / Phone Number / Email

TO FURNISH AND DELIVER ALL MATERIALS, AND TO DO AND PERFORM ALL WORK IN ACCORDANCE WITH THE CONTRACT, THE PLANS AND THE APPROVED DEPARTMENT OF TRANSPORTATION "STANDARD SPECIFICATIONS FOR CONSTRUCTION", 2018 EDITION ON FILE IN THE OFFICE OF THE COUNTY ENGINEER EXCEPT AS STATED OTHERWISE IN THE SPECIAL PROVISIONS INCLUDED IN THIS PROPOSAL, FOR

PROJECT NO.                    C.P. 26-52  
STATE PROJ. NO.                019-643-007, 195-020-024  
MINN. PROJ. NO.                STPF 1918 (126)

LOCATION:                        County State Aid Highway 43 (Lexington Ave) from 790' south of CSAH 26 (Lone Oak Rd) to 1190 feet north of CSAH 26 (Lone Oak Rd)

TYPE OF WORK:                Grading, aggregate base, bituminous surface, bituminous mill & overlay, storm sewer, watermain, traffic signal, retaining wall, pedestrian curb ramps, concrete curb & gutter, concrete walk, and pavement markings

LENGTH:                        CSAH 43 Approximately 0.46 miles

STARTING DATE:                September 25, 2019 or 8 days after notice of contract approval

COMPLETION DATE:             Stage 1 – July 10, 2020  
    Stage 2 - August 10, 2020  
    Stage 3 - September 08, 2020

**\*\*\*\*\*NOTICE TO BIDDERS\*\*\*\*\***

**THE FOLLOWING MUST BE COMPLETED TO HAVE YOUR BID CONSIDERED FOR THIS PROJECT:**

- **BIDDERS MUST SUBMIT BIDS ELECTRONICALLY AT: <https://bidvault.mn.uccs.com>**
- **SUBMIT THE FOLLOWING DOCUMENTS BY EMAIL OR U.S. MAIL IN ACCORDANCE WITH THE SPECIAL PROVISIONS OF THIS PROPOSAL: COVER SHEET, NOTICE TO BIDDERS - SPECIFICATIONS, STIPULATION FOR FOREIGN IRON OR STEEL MATERIALS (IF APPLICABLE), NON-COLLUSION AFFIDAVIT, DAKOTA COUNTY BID BOND FORM, FORM CM 32-34, RESPONSIBLE CONTRACTOR CERTIFICATE, TRADE SECRET FORM, AND FORM 21126D WITH DBE GOAL.**

BID RIGGING IS A SERIOUS CRIME. IF YOU HAVE ANY INFORMATION CONCERNING COLLUSIVE BIDDING, EVEN A REQUEST TO SUBMIT A COMPLIMENTARY BID, PLEASE CALL THE MINNESOTA ATTORNEY GENERAL'S OFFICE AT (651) 296-1796.

**Bidder must fill in unit prices in numerals; make the correct extension for each item and grand total. For complete information concerning these items, see Plans and Specifications, including Special Provisions.**

**CP 26-52**

Line No.	Item No.	Description	Units	Quantity	Unit Price	Total Price
1	2011.601	AS BUILT	LS	1		
2	2021.501	MOBILIZATION	LS	1		
3	2031.502	FIELD OFFICE TYPE D-MODIFIED	EACH	1		
4	2101.505	CLEARING	ACRE	1.54		
5	2101.505	GRUBBING	ACRE	1.54		
6	2101.524	CLEARING	TREE	35		
7	2101.524	GRUBBING	TREE	35		
8	2102.503	PAVEMENT MARKING REMOVAL	L F	35020		
9	2104.502	REMOVE MANHOLE OR CATCH BASIN	EACH	12		
10	2104.502	REMOVE CASTING	EACH	1		
11	2104.502	REMOVE GATE VALVE & BOX	EACH	1		
12	2104.502	REMOVE HYDRANT	EACH	2		
13	2104.502	REMOVE SIGN	EACH	1		
14	2104.502	REMOVE SIGN TYPE C	EACH	35		
15	2104.502	REMOVE SIGN TYPE D	EACH	1		
16	2104.502	REMOVE SIGNAL SYSTEM A	EACH	1		
17	2104.503	SAWING CONCRETE PAVEMENT (FULL DEPTH)	L F	163		
18	2104.503	SAWING BIT PAVEMENT (FULL DEPTH)	L F	1368		
19	2104.503	REMOVE WATER MAIN	L F	28		
20	2104.503	REMOVE SEWER PIPE (STORM)	L F	280		
21	2104.503	REMOVE CURB & GUTTER	L F	6621		
22	2104.503	REMOVE WOOD FENCE	L F	411		
23	2104.504	REMOVE BITUMINOUS PAVEMENT	S Y	16617		
24	2104.518	REMOVE BITUMINOUS WALK	S F	15603		
25	2104.518	REMOVE CONCRETE WALK	S F	7741		
26	2104.518	REMOVE CONCRETE DRIVEWAY PAVEMENT	S F	7808		
27	2106.507	EXCAVATION - COMMON (P)	C Y	12545		
28	2106.507	EXCAVATION - SUBGRADE	C Y	14386		
29	2106.507	SELECT GRANULAR EMBANKMENT (CV)	C Y	15400		
30	2106.507	COMMON EMBANKMENT (CV) (P)	C Y	3221		
31	2211.507	AGGREGATE BASE (CV) CLASS 5 (P)	C Y	5652		
32	2232.504	MILL BITUMINOUS SURFACE (6.5")	S Y	4036		
33	2301.602	DRILL & GROUT REINF BAR (EPOXY COATED)	EACH	72		
34	2360.509	TYPE SP 9.5 WEARING COURSE MIX (2;B)	TON	409		
35	2360.509	TYPE SP 12.5 NON WEAR COURSE MIX (4;B)	TON	2575		
36	2360.509	TYPE SP 12.5 WEARING COURSE MIX (4;C)	TON	5599		
37	2402.503	ORNAMENTAL METAL RAILING	L F	393		
38	2411.618	SOLDIER PILE WALL	S F	4101		
39	2451.507	FINE FILTER AGGREGATE (LV)	C Y	217		
40	2451.507	FINE FILTER AGGREGATE (CV)	C Y	271		
41	2501.502	15" RC PIPE APRON	EACH	1		
42	2501.502	24" RC PIPE APRON	EACH	2		
43	2501.502	30" RC PIPE APRON	EACH	1		
44	2501.602	PLUG & ABANDON PIPE CULVERT	EACH	3		
45	2502.503	6" PVC PIPE DRAIN	L F	19		
46	2502.503	6" PERF PVC PIPE DRAIN	L F	301		
47	2502.503	4" PERF PE PIPE DRAIN	L F	4080		
48	2502.602	6" PVC PIPE DRAIN CLEANOUT	EACH	6		
49	2503.503	22" SPAN RC PIPE-ARCH SEWER CL IIA	L F	472		
50	2503.503	12" RC PIPE SEWER DES 3006 CL V	L F	62		
51	2503.503	15" RC PIPE SEWER DES 3006 CL IV	L F	1835		
52	2503.503	24" RC PIPE SEWER DES 3006 CL III	L F	115		
53	2503.503	30" RC PIPE SEWER DES 3006 CL III	L F	47		
54	2503.602	CONNECT TO EXISTING SANITARY SEWER	EACH	1		
55	2503.602	CONNECT TO EXISTING STORM SEWER	EACH	7		